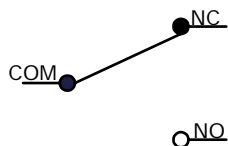


P.C. MOUNTING

O.P. (MM)	P.T. (MM)
5.5 ±0.5	0.5 MAX

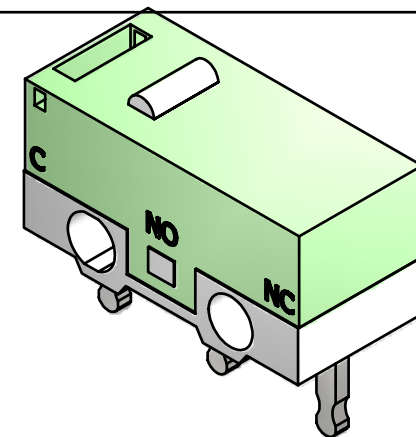
O.P. = OPERATING POINT
P.T. = PER-TRAVEL



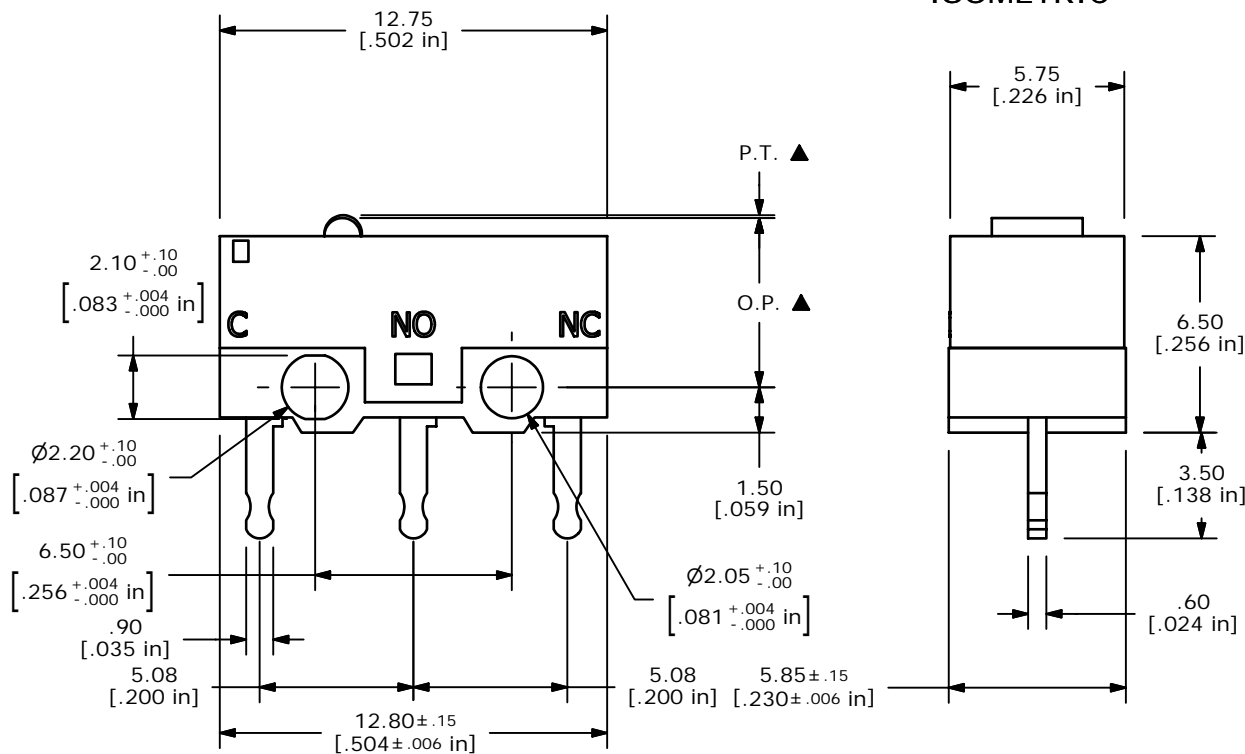
CIRCUIT: SPDT

NOTES:

- ALL DIMENSIONS IN MM [INCH]
- GENERAL TOLERANCE: X.X=±0.4
X.XX=±0.25
- ▲** 3. RATING: 0.1A @ 5VDC
4. OPERATING FORCE: 50±12 GRAMS
5. OPERATING TEMP: -25°C TO 105°C
6. ELECTRICAL LIFE: 300,000 CYCLES MIN.
7. INSULATION RESISTANCE: 100 MEGA-OHMS
8. DIELECTRIC STRENGTH: 1000VAC-MIN.
9. **▲** DENOTES CRITICAL PARAMETER.
10. 2002/95/EC (ROHS) COMPLIANT
11. CONTACT MATERIAL: SILVER



ISOMETRIC



B	17485	REVISED AND REDRAWN	7/18/07	BF
REV	PCR NO	DESCRIPTION	DATE	BY

TITLE DM085Q100F060P1A				
SCALE	DATE	DR	DWG	REV
4:1	7/18/2007	BF	P030022	B

THE INFORMATION CONTAINED IN THIS DOCUMENT IS PROPRIETARY TO E-SWITCH AND IS NOT TO BE COPIED OR TRANSFERRED